



The Natural Form Pressure Air-4 offers outstanding pressure displacement and redistribution through the use of static air technology for the prevention and aid of pressure ulcer care. Comprised of four non-circular static air chambers that offer dynamic support in displacing body weight and a hybrid memory foam top that provides the ultimate in comfort. The Natural Form Pressure Air-4 provides better pressure ulcer care for low to medium risk patients.

Natural Form Pressure Air-4 Pressure Management Mattress

The Natural Form Pressure Air-4 was designed like no other therapeutic support surface in the long term care industry. The four static air chambers are filled with foam and air to support, redistribute and displace the weight of the patient off the bony prominences and areas prone to pressure ulcers. One twist of the valve adjusts and releases ambient air throughout the system providing a dynamic surface without the use of a pump.

The top layer is a Certi-Pur hybrid visco-elastic foam which provides optimal comfort and therapeutic support for patients, while the base layer of foam provides additional support. The hybrid foam is a new proprietary product only available on Natural Form mattresses. It cradles the patient without giving them that sinking feeling as most visco elastics do, and also helps reduce the spike in temperature as well. The base layer also contains a five degree heel slope designed to alleviate pressure on sensitive areas of the patient's heel.

The Derma-Plush cover is a breathable urethane knit synthetic material with a low moisture vapor transmission (MVT) rate that prevents fluids from entering the mattress. This soft, stretchable material will significantly reduce "hammocking", thereby reducing the interface pressure between the mattress surface and the bony prominences of the patient. It is antibacterial and antifungal, and launderable. The cover also has a three sided zipper for easy removal, and a zipper flap for increased infection control.

Side bolsters come as an optional feature that raise the side of the mattress two inches above the surface and reminds the patient that they are close to the edge of the bed. Cut-outs are also centered on the bolsters to allow for easy patient ingress/egress.

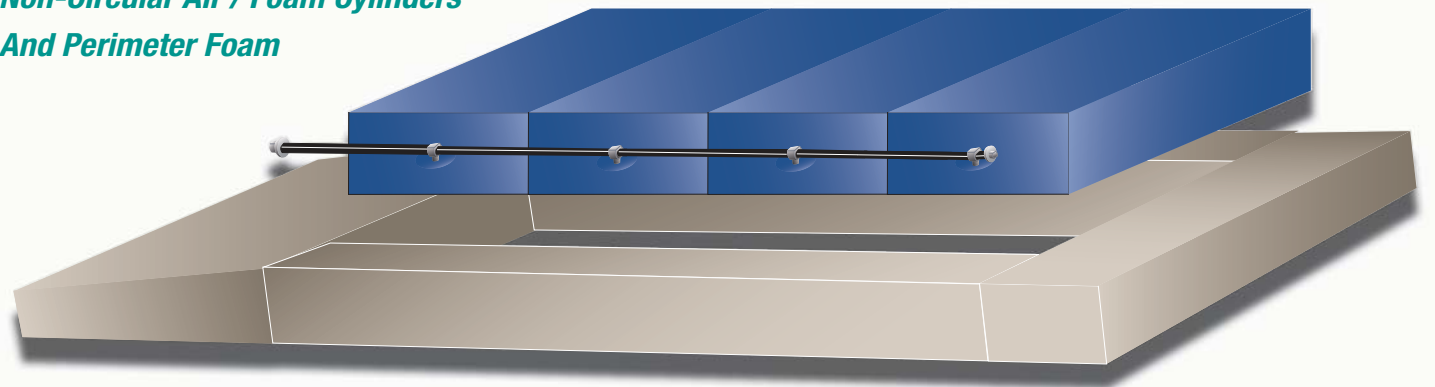
Derma-Plush Cover



*Hybrid Visco Elastic
Top Layer*



*Non-Circular Air / Foam Cylinders
And Perimeter Foam*



Derma-Plush Cover

- Urethane knit synthetic multi-stretch top fabric with non-skid bottom surface and handles
- Permanent fluid barrier with low moisture vapor transmission
- Antimicrobial and antifungal
- Helps reduce patient shear
- Three sided zipper for easy removal and zipper flap for infection control
- Machine washable, launderable

Hybrid Visco Elastic Top Layer

- 2.5" of Certi-PUR visco-elastic hybrid memory foam only available on Natural Form mattresses
- Latex free, antimicrobial and anti-bacterial
- Nearly eliminates heel pressure with "floating effect" technology
- Provides pressure redistribution of body weight and keeps patient cooler than traditional visco-elastics
- Envelopes around the irregularities of a patient's body without sinking too far into the mattress

Air Cylinders

- 4 Cylinders filled with air and foam to provide dynamic therapeutic support and pressure redistribution while not bottoming out
- Cylinders can remain static (air-filled) or ambient air can be released allowing pressure displacement*
- No pump required

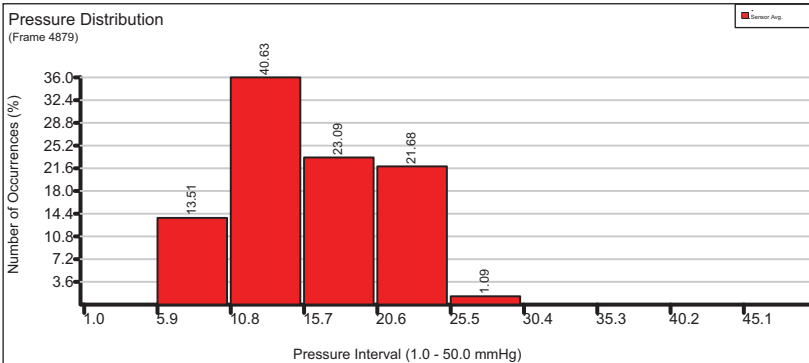
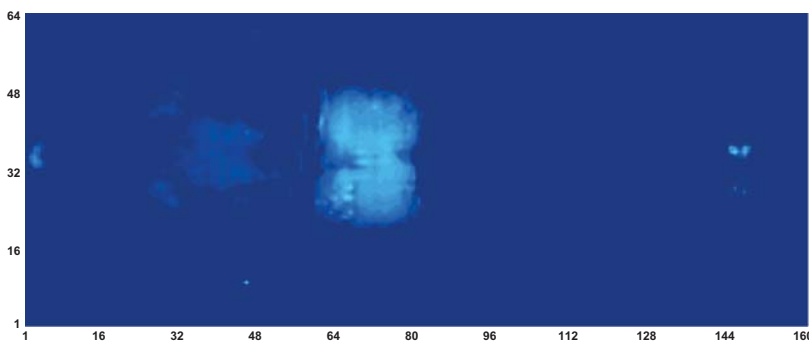
* Pressure can only be displaced with a fluid or a gas, not with foam

Perimeter Foam Shell

- 3" antimicrobial, antibacterial, firm perimeter foam
- Keeps air cylinders in place and firmness allows for better patient egress/ingress
- Base foam adds additional support
- 5 degree heel slope distributes pressure from the patient's feet onto the legs, assisting with the prevention and the maintenance of pressure ulcers
- Option for raised perimeters (bolsters)

XSENSOR™ Technology Corporation
Innovators in Pressure Imaging

File: Pressure Air-4
Frame: 2780
Range: 10.0 to 200.0 mmHg
Avg/Peak: 15.9/ 27.7 mmHg
Area: 229.50in²



mmHg	Count
50.0	0
48.7	0
47.4	0
46.1	0
44.8	0
43.5	0
42.3	0
41.0	0
39.7	0
38.4	0
37.1	0
35.8	0
34.5	0
33.2	0
31.9	0
30.6	0
29.4	0
28.1	0
26.8	4
25.5	7
24.2	20
22.9	54
21.6	75
20.3	63
19.0	68
17.7	50
16.5	50
15.2	55
13.9	47
12.6	79
11.3	166
10.0	180
	9322
10.0 - 50.0	

Sensor / Group	Value
S0092	
Average Pressure	15.9
Peak Pressure	27.7
Area (in ²)	229.50
General Notes	
Subject	Male
Age	72 years
Height	6' 2"
Weight	217 lb

* Pressure Mapping readings taken from Natural Form Pressure Air-4 mattress in static mode using XSENSOR X3 MEDICAL version 6.0

* Patient lying in supine position for 15 minutes while testing

* Over 98% of total body area is mapped with a reading under 23.5 mmHg

* Over 77% of total body area is mapped with a reading under 18 mmHg

* Average pressure is 15.9 mmHg

* Pressure relieving is under 32 mmHg

Pressure Air-4 Mattress Specifications

- Standard Size: 35" x 80" x 6.5"
- Custom sizes available including bariatric sizes (42" - 48")
- Maximum weight: 750 lb (340 kg)
- Consult frame manufacturer regarding capacity
- Compliant with 1633, Cal TB 129, ASTM E 1590 and BFDIX-11 (Boston) fire safety regulations
- 5 year warranty on all Pressure Air-4 mattresses
- Financing options available on all mattresses
- All components are latex free
- SoFlux cover available as an option
- Available with 2" side-bolsters

MADE IN THE U.S.A. 